

Navigating a downloadable report

Print to PDF. Click on the printer icon to create a pdf version.

If the ToC is collapsed, click on these arrows to expand. Use the dropdown box to navigate to the additional sections

Back THE UNIVERSITY OF TEXAS SYSTEM Nine Universities. Six Health Institutions. Unlimited Possibilities. SAS Web Report Studio - Tech Transfer Multi

File view Data

By Institution Gross Revenue from IP Invention Disclosures **U.S. Patents Issued** Licenses and Options Startup Companies

Level > UT System Breadcrumbs tell you where you are in your drill down. Click on a crumb to go to previous levels.

Table of Contents U.S. Patents Issued

Section Data Options

U.S. Patents Issued, Totals by Grouping Applied filters: Time 10 years ending with the last year (currently 2012-13)

| Fiscal Year | 2003-04 | 2004-05 | 2005-06 | 2006-07 | 2007-08 | 2008-09 | 2009-10 | 2010-11 | 2011-12 | 2012-13 |
|---------------------|---------|---------|---------|---------|---------|---------|---------|---------|---------|---------|
| U.S. Patents Issued | 120 | 115 | 120 | 125 | 100 | 115 | 145 | 160 | 155 | 175 |

U.S. Patents Issued Applied filters: Time 10 years ending with the last year (currently 2012-13)

Right click in the graph to filter and rank the data, export, etc.

Legend: Academic Health

Right click on the legend to drill down.

Table: U.S. Patents Issued Applied filters: Time 10 years ending with the last year (currently 2012-13)

| Fiscal Year | 2003-04 | 2004-05 | 2005-06 | 2006-07 | 2007-08 | 2008-09 | 2009-10 | 2010-11 | 2011-12 | 2012-13 |
|-------------|---------|---------|---------|---------|---------|---------|---------|---------|---------|---------|
| Academic | 40 | 43 | 45 | 46 | 38 | 48 | 61 | 62 | 77 | 86 |
| Health | 80 | 71 | 72 | 76 | 61 | 64 | 84 | 96 | 80 | 90 |

Source: "Technology Development and Transfer", Texas Higher Education Coordinating Board

Definitions, Methodology, and Notes

Explore more: Visualizations available for Technology Transfer on exploredata.utssystem.edu.

The report "Tech Transfer Multi" was downloaded from The UT System Productivity Dashboard at data.utssystem.edu on Wednesday.

Table of Contents. Some data has more than one view, or section. Click on the down arrow to view more sections.

The Down Arrow = Drill. Clicking on the "⌵" will drill down to the next level of data.

If you would like to contact us, click for our information.

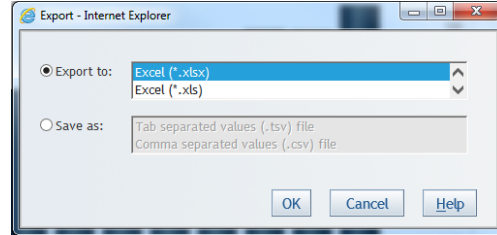
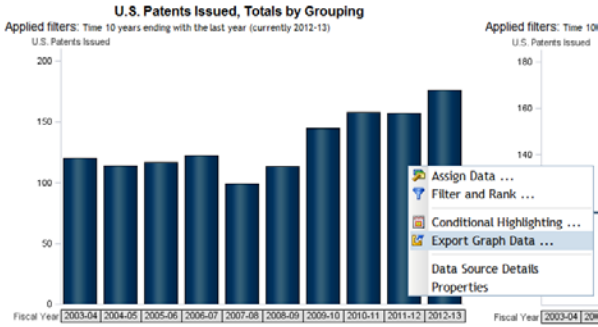
- In the tables:
- Click on a cell to see the detailed data
 - Right click on a row header to see the detailed data for all columns of that row
 - Right click on a column header to sort or filter.
 - Right click anywhere in the white data area to export the table.

At the bottom of each "page" you will find the data source, a link to information on the related data definitions and methodology, links to additional resources when available, and perhaps a helpful user tip.

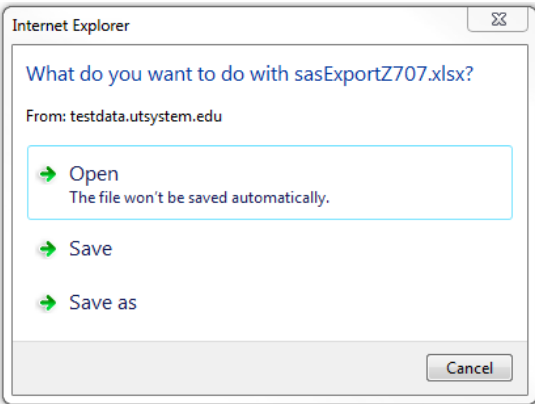
Exporting the Data from a Downloadable Report

Exporting ONE Table or Graph data from a Report:

Right click on the graph/table, selecting Export Graph Data. Select the file type and click OK.



Either select open or save the file. The data is now available on your computer.



okExportTableGraphData [Read-Only] - Microsoft Excel

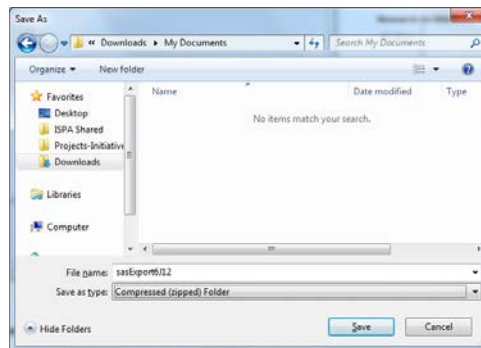
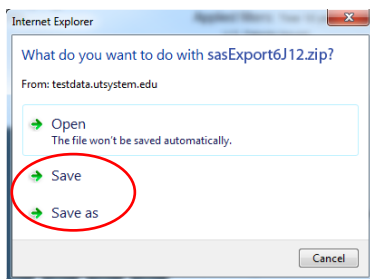
| Applied filters: Time 10 years ending with the last year (currently 2012-13) | | | | | | | | | | | | |
|--|---------|---------|---------|---------|---------|---------|---------|---------|---------|---------|--|--|
| Fiscal Year | 2003-04 | 2004-05 | 2005-06 | 2006-07 | 2007-08 | 2008-09 | 2009-10 | 2010-11 | 2011-12 | 2012-13 | | |
| U.S. Patents Issued | 120 | 114 | 117 | 122 | 99 | 113 | 145 | 158 | 157 | 176 | | |

Exporting ALL Tables and Graphs in a Report:

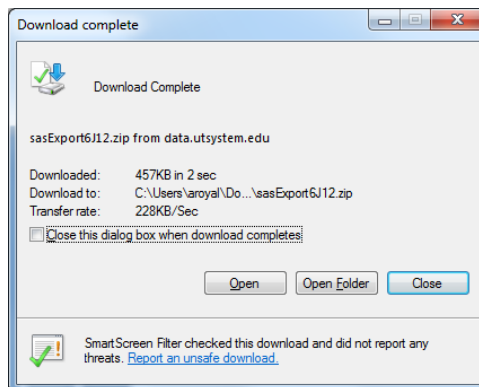
To export the graphs and tables, click on either File → Export or the icon to begin export wizard.

The screenshot shows the SAS software interface. The 'File' menu is open, and the 'Export ...' option is highlighted with a red circle. A red arrow points from the text above to this option. Another red arrow points from the text above to a small icon in the top right corner of the software window. To the right of the menu is a bar chart titled 'U.S. Patents Issued, Totals by Grouping'. The chart shows the number of patents issued over time, with the y-axis ranging from 100 to 200. The x-axis represents different time periods. The chart is filtered for 'Time 10 years ending with the last year (currently 2012-13)'. The chart shows a general upward trend in the number of patents issued over the period shown.

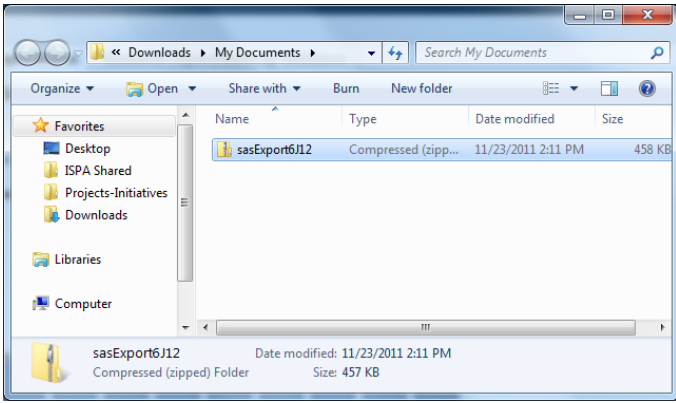
Save the zip file to your computer.



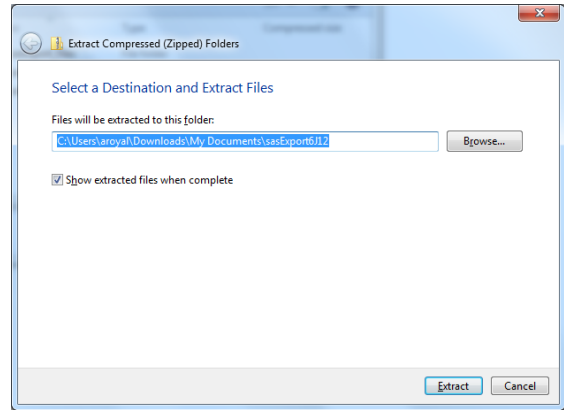
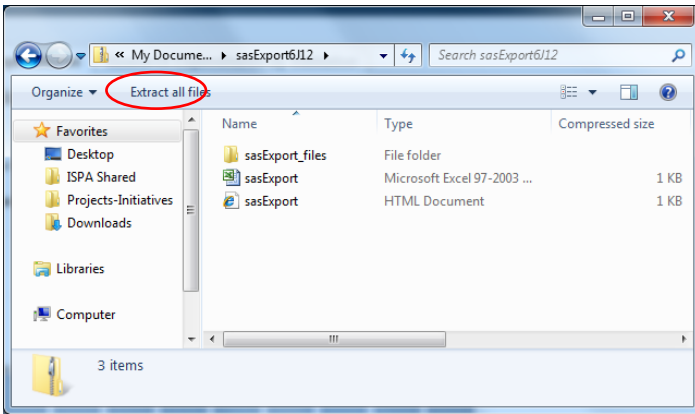
Once download is complete, open the folder.



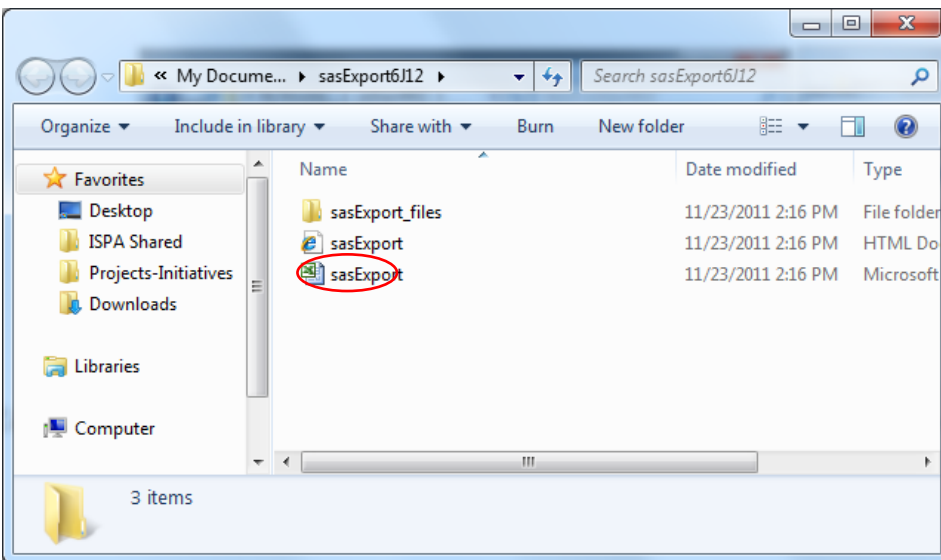
Double click on the zip file.



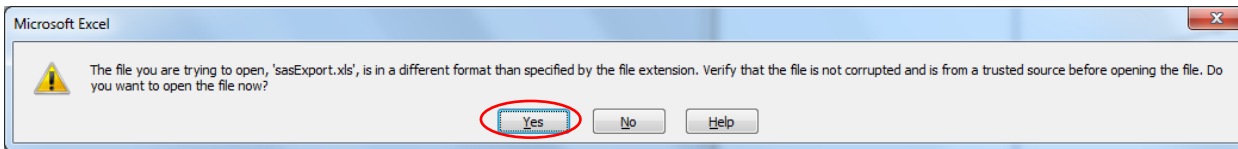
Extract all files.



Open the Excel file to view your tables and graphs.



You may receive a warning. Select 'Yes'.



You should now have your tables and graphs opened in Excel.

Excel notes:

- The graphs overlay the data table. You may need to drag the graphs to another area in the spreadsheet to view the data table.
- The first spreadsheet is the data as you viewed it on the web. The "Recovered_Sheet" tabs at the bottom of the spreadsheet are the individual institutions' data.